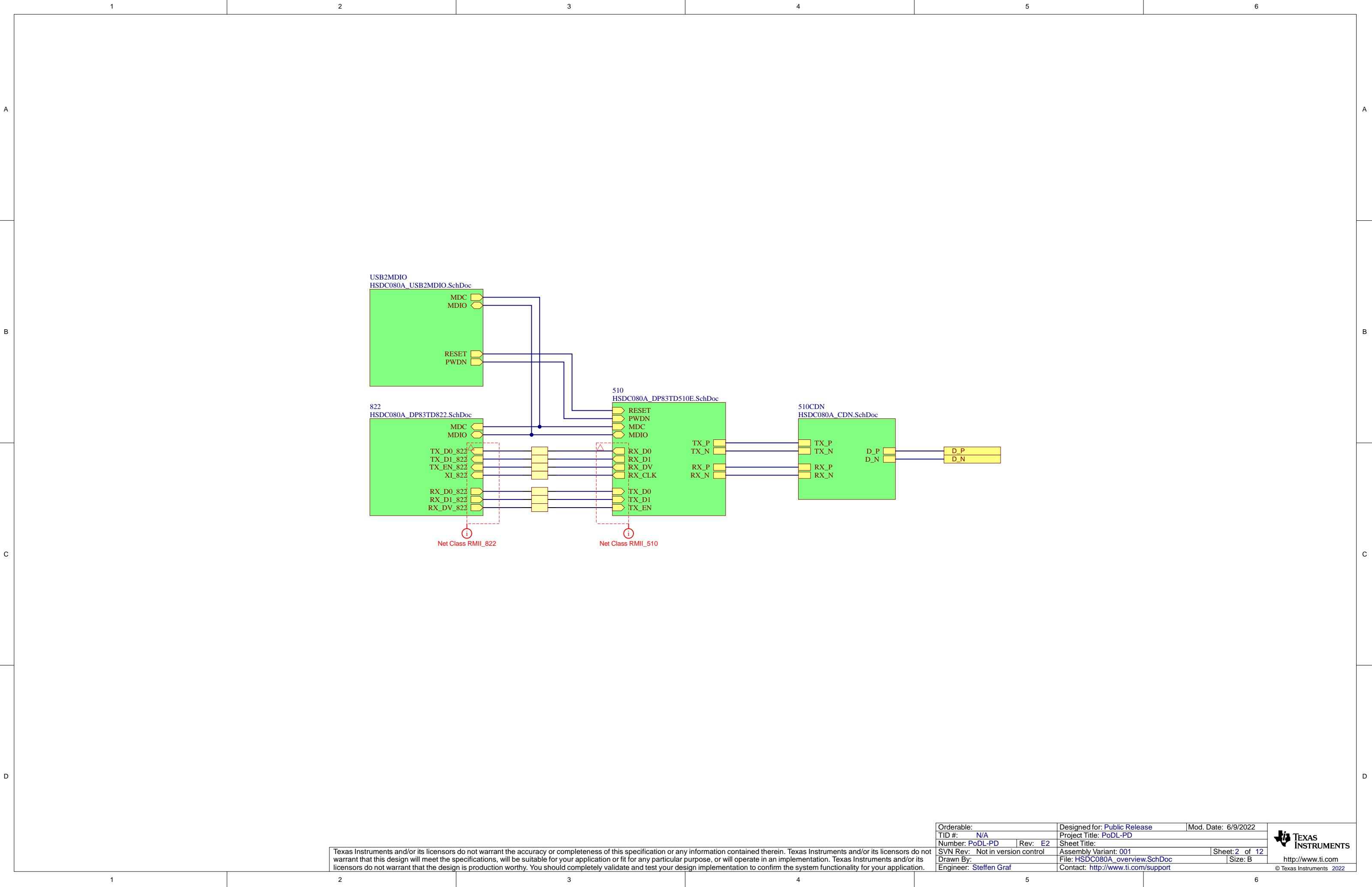


HW  
PD-EVM\_Hardware.SchDoc

Texas Instruments and/or its licensors do not warrant the accuracy or completeness of this specification or any information contained therein. Texas Instruments and/or its licensors do not warrant that this design will meet the specifications, will be suitable for your application or fit for any particular purpose, or will operate in an implementation. Texas Instruments and/or its licensors do not warrant that the design is production worthy. You should completely validate and test your design implementation to confirm the system functionality for your application.

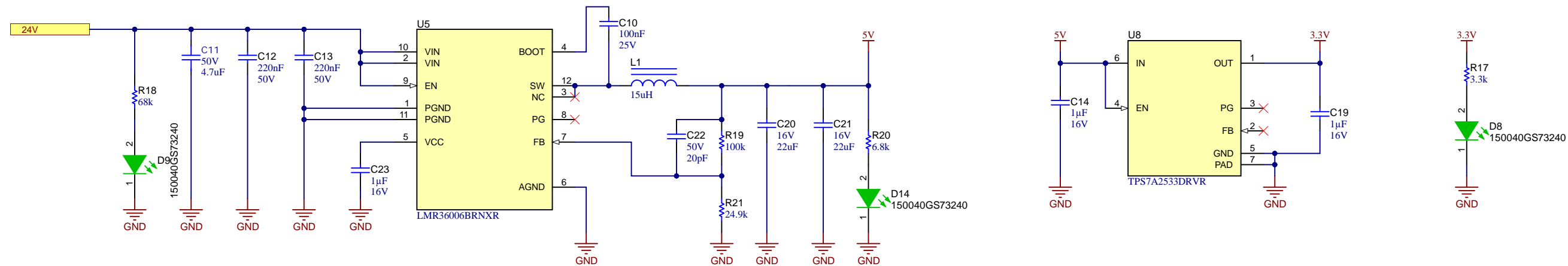
Orderable:		Designed for: Public Release		Mod. Date: 5/10/2022	
TID #:		N/A		Project Title: PoDL-PD	
Number: PoDL-PD		Rev: E2		Sheet Title:	
SVN Rev: Not in version control		Assembly Variant: 001		Sheet: 1 of 8	
Drawn By:		File: PD-EVM-Main.SchDoc		Size: B	
Engineer: Steffen Graf		Contact: http://www.ti.com/support			



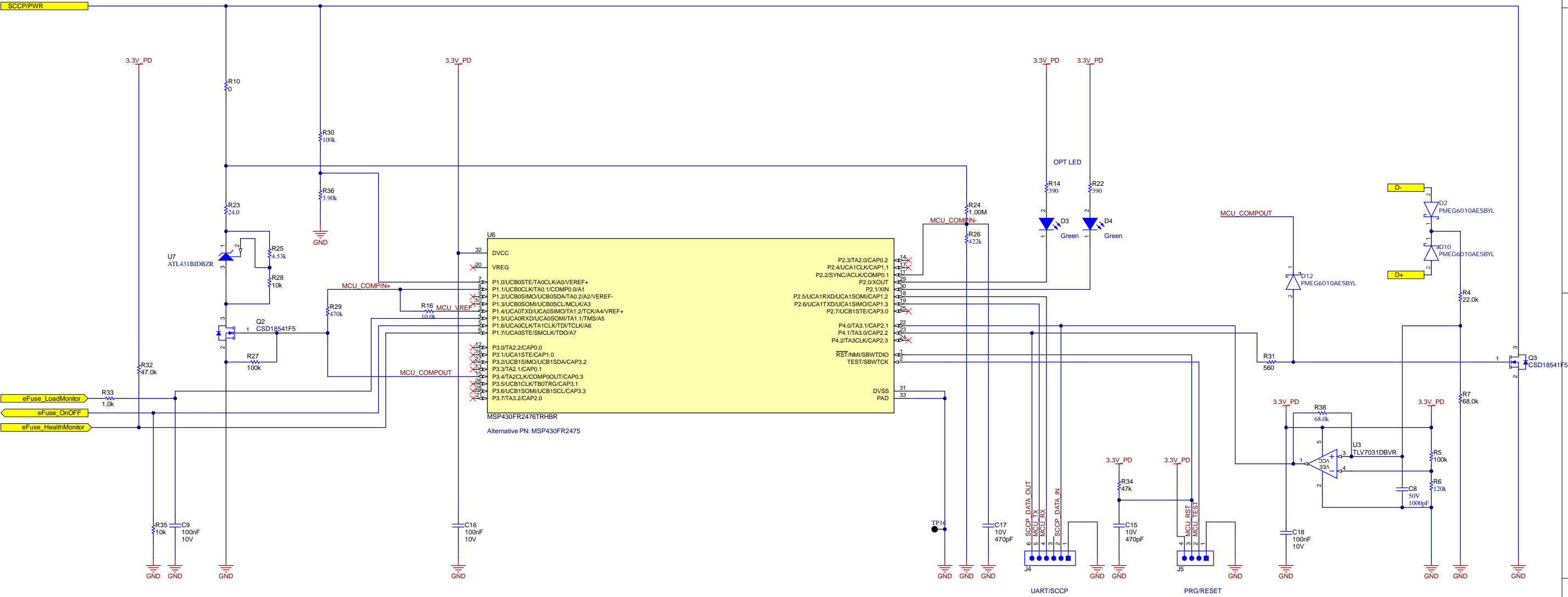
Texas Instruments and/or its licensors do not warrant the accuracy or completeness of this specification or any information contained therein. Texas Instruments and/or its licensors do not warrant that this design will meet the specifications, will be suitable for your application or fit for any particular purpose, or will operate in an implementation. Texas Instruments and/or its licensors do not warrant that the design is production worthy. You should completely validate and test your design implementation to confirm the system functionality for your application.

Orderable:	Designed for: <a href="#">Public Release</a>	Mod. Date: 6/9/2022
TID #: <a href="#">N/A</a>	Project Title: <a href="#">PoDL-PD</a>	
Number: <a href="#">PoDL-PD</a>	Rev: <a href="#">E2</a>	Sheet Title:
SVN Rev: Not in version control	Assembly Variant: <a href="#">001</a>	Sheet: <a href="#">2</a> of <a href="#">12</a>
Drawn By:	File: <a href="#">HSDC080A_overview.SchDoc</a>	Size: B
Engineer: <a href="#">Steffen Graf</a>	Contact: <a href="#">http://www.ti.com/support</a>	

Revision History				
Rev	ECN #	Approved Date	Approved by	Notes
N/A	N/A	N/A	N/A	N/A



MSP430 MCU  
SCCP/VID



A

B

C

D

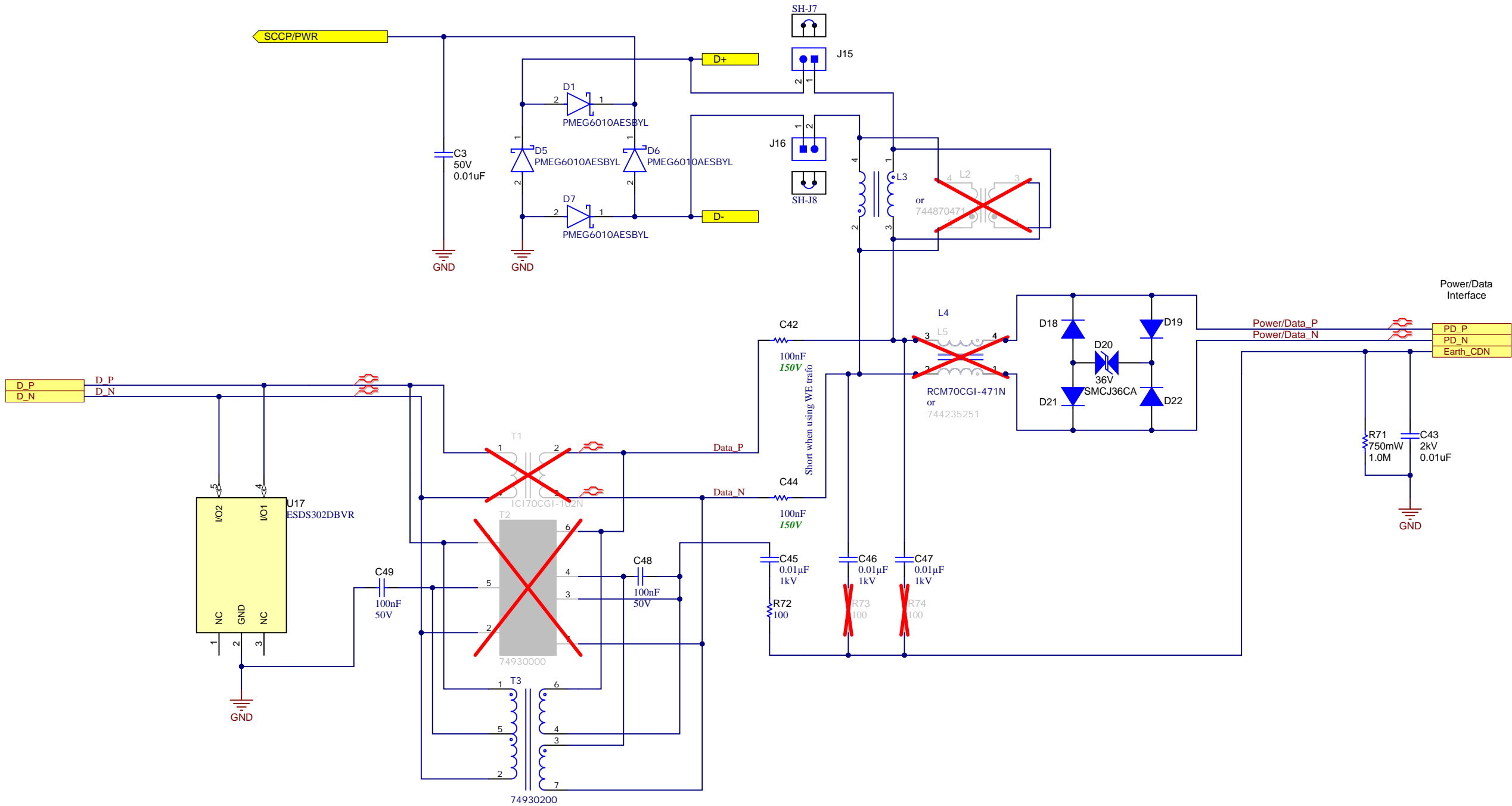
A

B

C

D

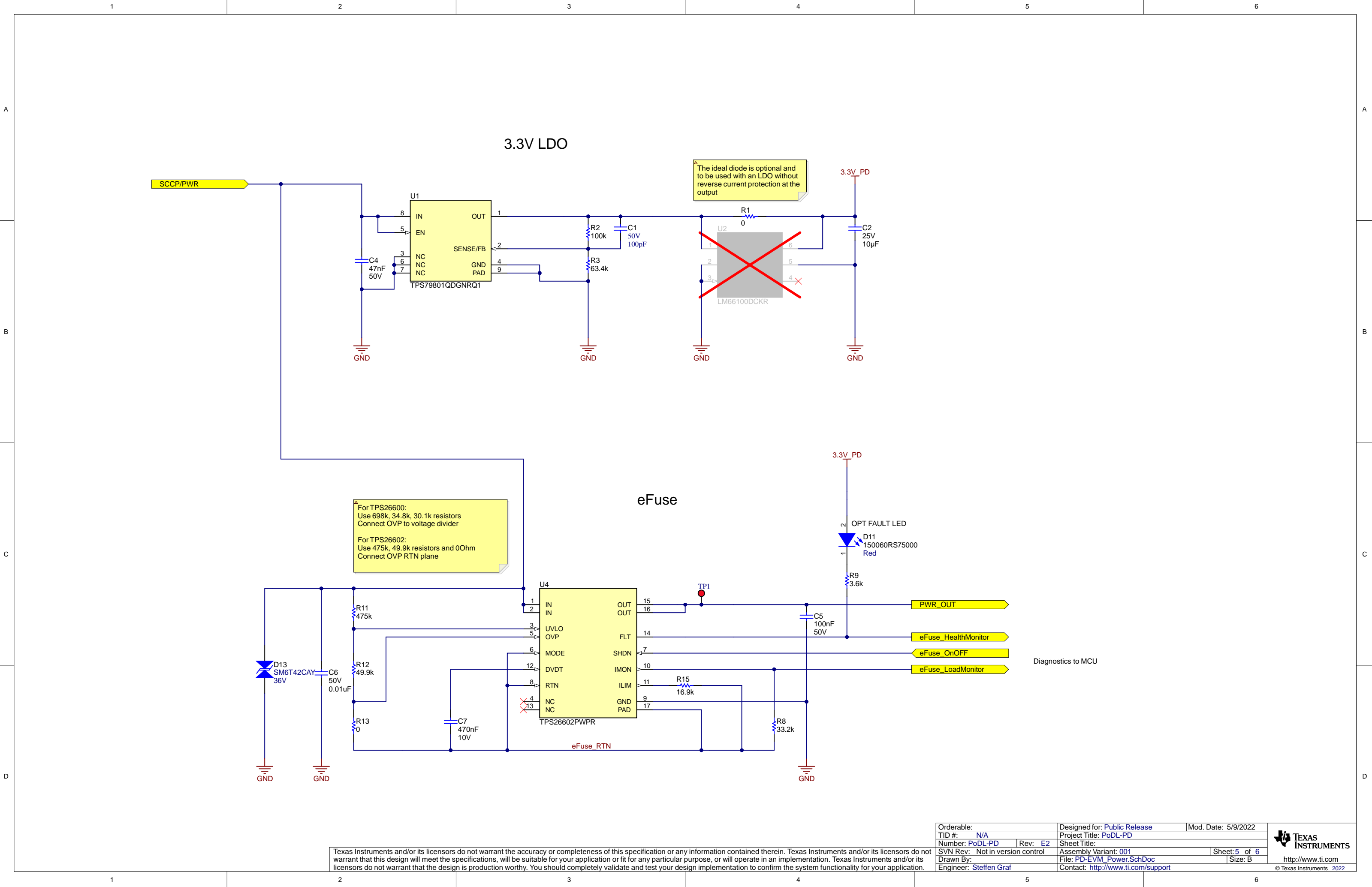
changes on EVM:  
R14 and R128 on EVM changed to 39 Ohm  
C118 and C128 shorted

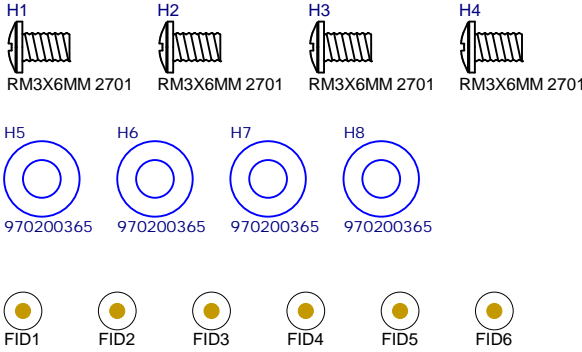


Coupling / Decoupling

Texas Instruments and/or its licensors do not warrant the accuracy or completeness of this specification or any information contained therein. Texas Instruments and/or its licensors do not warrant that this design will meet the specifications, will be suitable for your application or fit for any particular purpose, or will operate in an implementation. Texas Instruments and/or its licensors do not warrant that the design is production worthy. You should completely validate and test your design implementation to confirm the system functionality for your application.

Orderable:	Designed for: Public Release	Mod. Date: 6/9/2022
TID #: N/A	Project Title: PoDL-PD	
Number: PoDL-PD	Rev: E2	Sheet Title:
SVN Rev: Not in version control	Assembly Variant: 001	Sheet: 3 of 12
Drawn By:	File: PD-EVM_CDN.SchDoc	Size: B
Engineer: Steffen Graf	Contact: <a href="http://www.ti.com/support">http://www.ti.com/support</a>	





PCB Number: PoDL-PD  
PCB Rev: E2

PCB  
LOGO  
Texas Instruments

  
CE Mark

PCB  
LOGO  
FCC disclaimer

PCB  
LOGO  
WEEE logo

LBL1

PCB Label

THT-14-423-10

Size: 0.65" x 0.20 "

ZZ1

Label Assembly Note

This Assembly Note is for PCB labels only

Variant/Label Table	
Variant	Label Text

ZZ2

Assembly Note

These assemblies are ESD sensitive, ESD precautions shall be observed.

ZZ3

Assembly Note

These assemblies must be clean and free from flux and all contaminants. Use of no clean flux is not acceptable.

ZZ4

Assembly Note

These assemblies must comply with workmanship standards IPC-A-610 Class 2, unless otherwise specified.

Texas Instruments and/or its licensors do not warrant the accuracy or completeness of this specification or any information contained therein. Texas Instruments and/or its licensors do not warrant that this design will meet the specifications, will be suitable for your application or fit for any particular purpose, or will operate in an implementation. Texas Instruments and/or its licensors do not warrant that the design is production worthy. You should completely validate and test your design implementation to confirm the system functionality for your application.

A

B

C

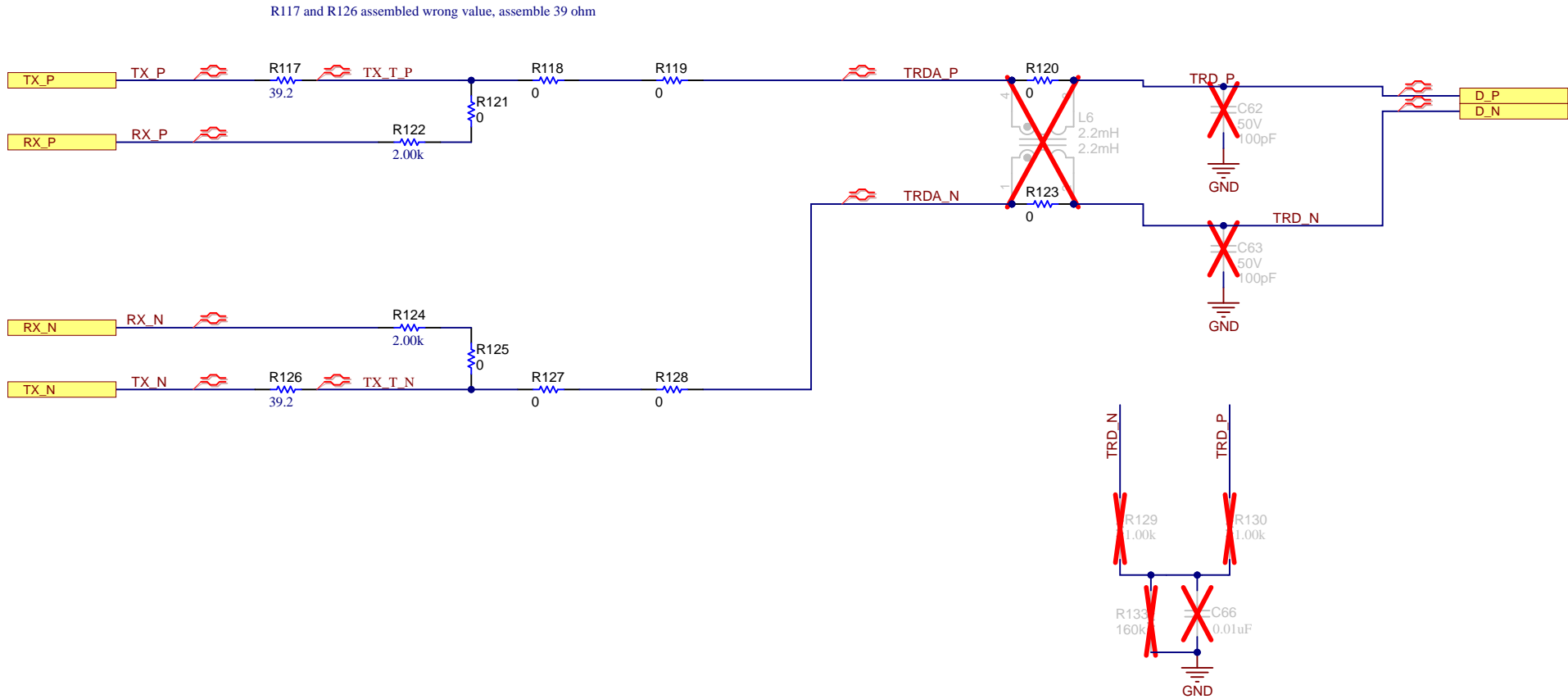
D

A

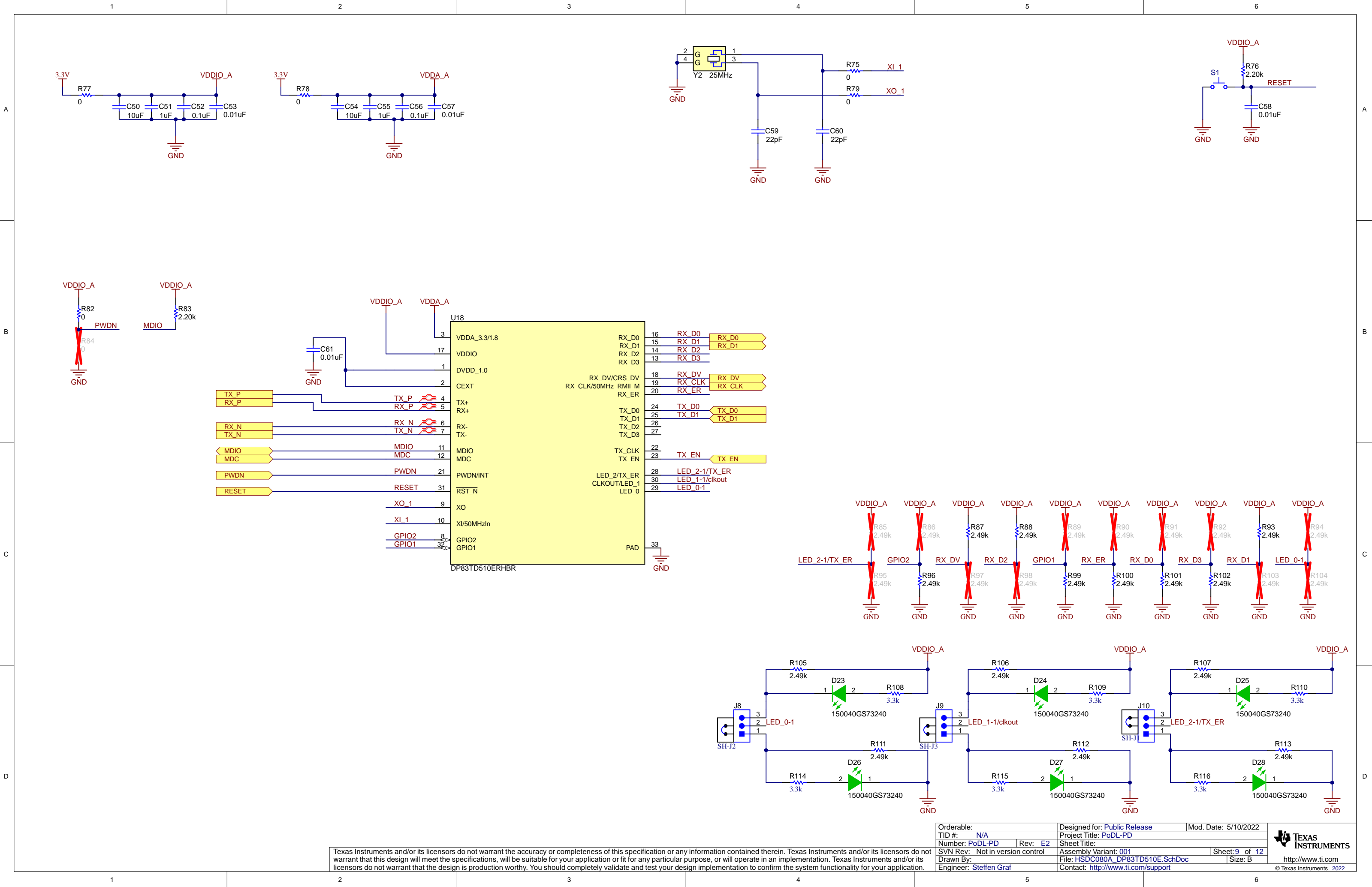
B

C

D





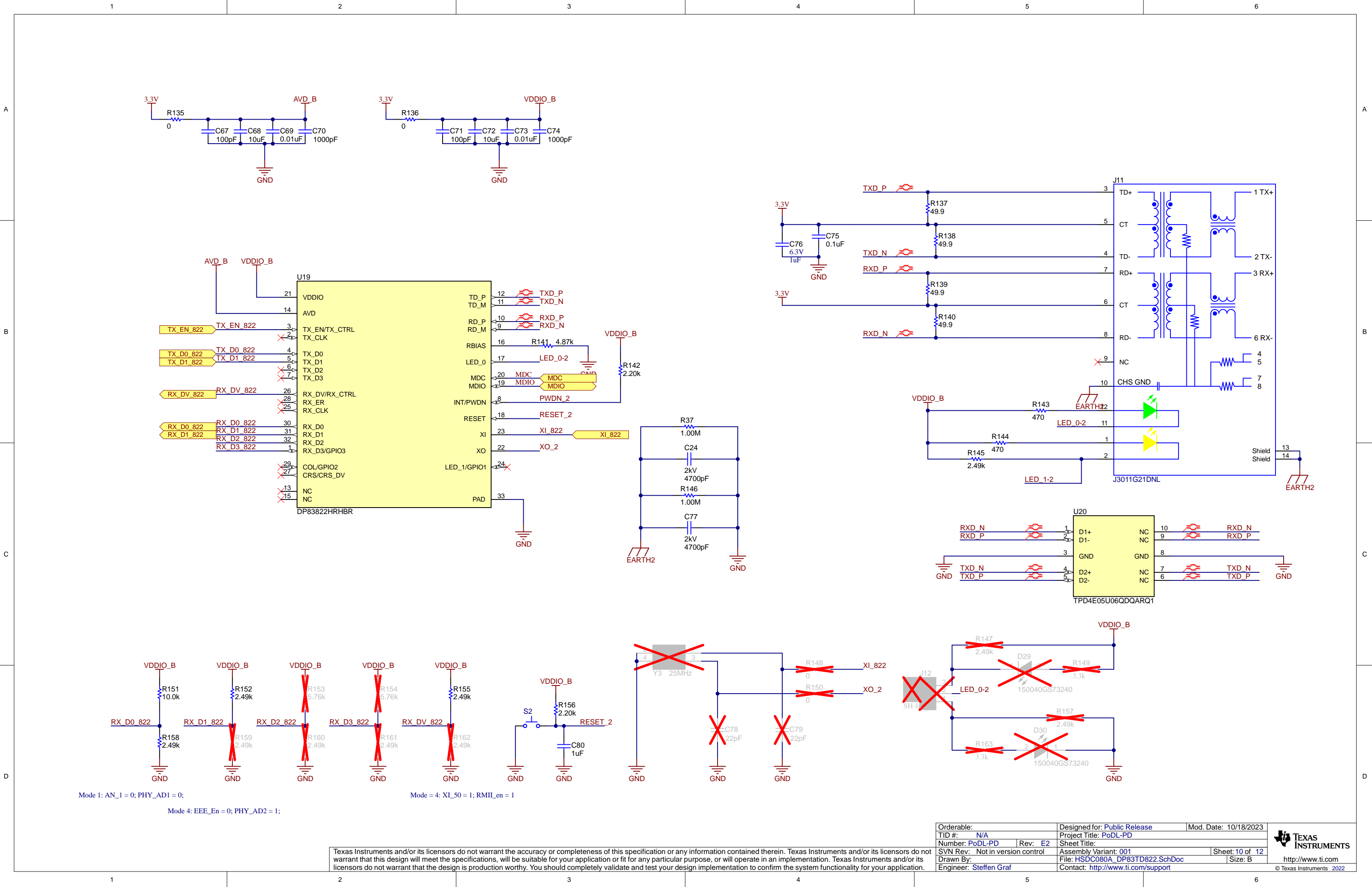


Texas Instruments and/or its licensors do not warrant the accuracy or completeness of this specification or any information contained therein. Texas Instruments and/or its licensors do not warrant that this design will meet the specifications, will be suitable for your application or fit for any particular purpose, or will operate in an implementation. Texas Instruments and/or its licensors do not warrant that the design is production worthy. You should completely validate and test your design implementation to confirm the system functionality for your application.

Orderable:		Designed for: Public Release		Mod. Date: 5/10/2022	
TID #:		Project Title: PoDL-PD			
Number: PoDL-PD		Rev: E2		Sheet: 9 of 12	
SVN Rev: Not in version control		Assembly Variant: 001		File: HSDC080A_DP83TD510E_SchDoc	
Drawn By:		Engineer: Steffen Graf		Contact: http://www.ti.com/support	
				Size: B	



© Texas Instruments 2022



Mode 1: AN\_1 = 0; PHY\_AD1 = 0;

Mode 4: EEE\_En = 0; PHY\_AD2 = 1;

Texas Instruments and/or its licensors do not warrant the accuracy or completeness of this specification or any information contained therein. Texas Instruments and/or its licensors do not warrant that this design will meet the specifications, will be suitable for your application or fit for any particular purpose, or will operate in an implementation. Texas Instruments and/or its licensors do not warrant that the design is production worthy. You should completely validate and test your design implementation to confirm the system functionality for your application.

Orderable:	Designed for: Public Release	Mod. Date: 10/18/2023
TID #:	Project Title: PoDL-PD	
Number: PoDL-PD	Rev: E2	Sheet Title:
SVN Rev: Not in version control	Assembly Variant: 001	Sheet: 10 of 12
Drawn By:	File: HSDC080A_DP83TD822_SchDoc	Size: B
Engineer: Steffen Graf	Contact: http://www.ti.com/support	

